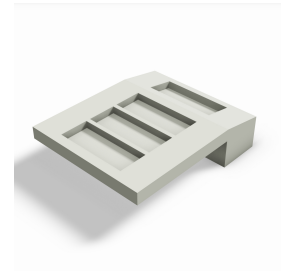


REVIT CONTENT GUIDE

Manufacturer:	Wiremold
File:	Device_Bracket-5500_Series-Wiremold-In_Line-Offset.rfa
Type Catalog:	Not Applicable
Rendering file:	Not Applicable
Schedule file:	Schedule - Raceway-5500.rvt



Instance Properties

Dimension	
Depth*	2.470
Height*	9.300
Width*	7.500
Graphics	
Has Snap Locations*	<input checked="" type="checkbox"/>
Identity Data	
Equipment Number*	
Part Description*	In-Line And Offset Device Bracket, Ivory
Part Number*	5550A4

Type Properties

The family contains the following 2 types:
 White (Values for this type are shown below)
 Ivory

Constraints	
Default Elevation	48.000
Identity Data	
Copyright*	Copyright © Wiremold
Date Created*	July 7, 2016
Date Modified*	July 7, 2016
Description*	See Part Description
Equipment Abbreviation*	RW
Family Version*	1.0
Manufacturer*	Wiremold
Model*	See Part Number
Model Disclaimer*	For More Information, Contact Wiremold
Product Documentation Link*	http://www.legrand.us/~media/products/resources/wiremold-products/raceway/nonmetallic-raceway/three-channel-raceway/5500-large-capacity-raceway/ed365r16.aspx
Product Page URL*	http://www.legrand.us/wiremold/raceway/nonmetallic-raceway/multi-channel-raceway/5500-large-capacity-raceway/5550a4-offset-mounting-device-bracket.aspx#.V37YSaljo8A
Type Image	-1
URL*	http://www.legrand.us/wiremold.aspx

Ifc	
ClassificationCode*	
ClassificationCode(10)*	
ClassificationCode(2)*	
ClassificationCode(3)*	
ClassificationCode(4)*	
ClassificationCode(5)*	
ClassificationCode(6)*	
ClassificationCode(7)*	
ClassificationCode(8)*	
ClassificationCode(9)*	
IfcApplicableOccurrence*	
IfcDescription*	
IfcElementType*	
IfcExportAs*	
IfcExportType*	
IfcName*	
IfcTag*	
Materials	
Product Material*	10113

Halftone text in the property tables indicates that the value is locked from editing.

*Indicates Shared Parameter and can be scheduled

Loading and Placing into the Project

One "Electrical Fixtures" family is supplied and can be loaded into a Revit project through all traditional methods. The device bracket requires a face host to be placed within the project (i.e. raceway). Also, ensure that the visibility settings within the project are modified to have the Electrical Fixtures category visible.

For ease of use, all raceway should be placed in a 3D view. When placing the bracket into a project it must be placed on any piece of existing 5500 raceway. There is a strong reference on top of the raceway to allow the user to place the family with ease.

Project Behavior

Within the type and instance properties dialogues, the user will find useful information for scheduling purposes such as Height, Width, Depth and other unique properties of the model. In "Identity Data" the user will find information specific to Wiremold and the model, i.e.: family revision information, Wiremold copyright information, part description, product URL and other specific data. *See scheduling description below.

The device bracket has snap locations set to allow for placement of any 5507 face plates. The snap locations can be turned off by de-selecting the 'Has Snap Locations' parameter or by turning off the 'Snap Locations' subcategory.

Instance Parameter

In the "Instance Parameters", the user has the following options to modify:

- Equipment Number – For tagging each placed instance.
- Has Snap Locations – Toggles the visibility of the snap locations.

Type Parameter

Each type represents a manufactured product. Therefore, the type parameters should not be modified by the user for standard configuration. Please note:

- Product Page URL – Directs to the manufacturer's online listing of the product.
- Product Documentation Link – Directs to the product's online specification sheet.
- Equipment Abbreviation – This parameter exists for filtering schedules. *See scheduling description below.
- Family Version – Lists the current revision number of the family.

Visibility

For best performance, all model geometry is turned off in all views and represented through masking regions and symbolic/model lines that update automatically when a user changes view properties.

Rendering

When the family file is loaded into the project, standard Wiremold materials are imported. These may be modified, though ensure that the modification selection matches an actual manufacturer supplied option.

Schedule Creation

Wiremold products may be scheduled utilizing the schedule view in the given project file. Select and copy (Ctrl-C) the schedule from the sheet view and paste it (Ctrl-V) into a sheet in your project. The schedule filters are set to look for only those units designated with Manufacturer as "Wiremold" and Equipment Abbreviation as "RW". The schedules contain special functionality for displaying the configured order numbers of the selected types.